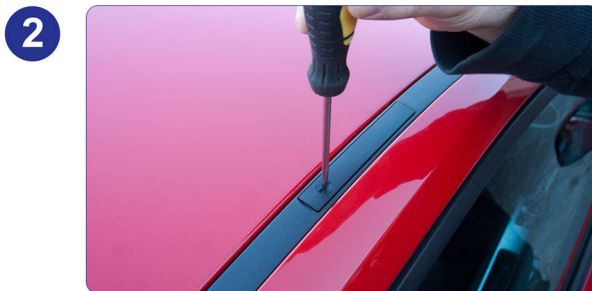




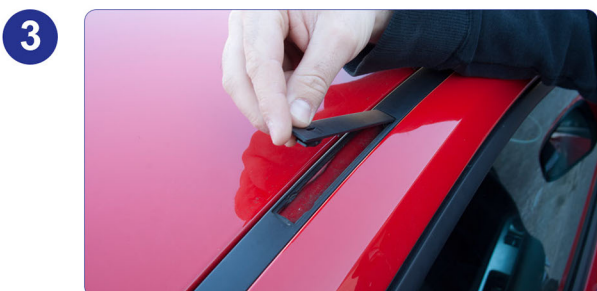
## Ford focus - finding the Fix points



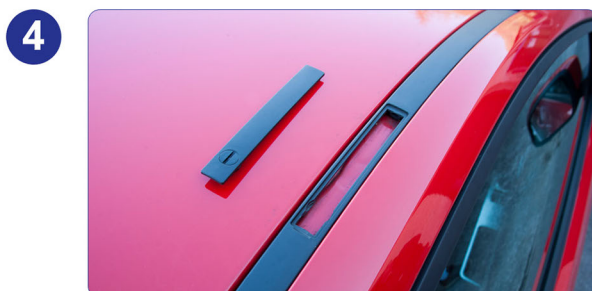
1 You will need a phillips and flat head screw driver.



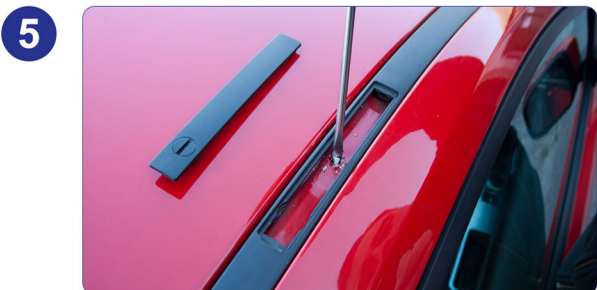
2 Use the flat head screw driver and turn the plastic cover screw ninety degrees.



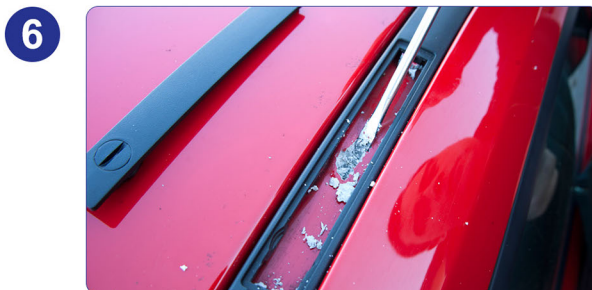
3 This will release the cover, lift forty five degrees up and slide out of the housing.



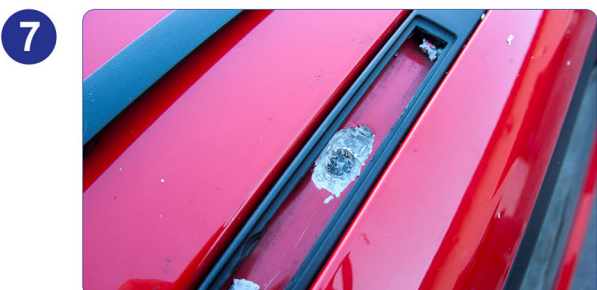
4 Each of the four channels are filled with a form of 'putty', the fix point is located in the centre of the channel.



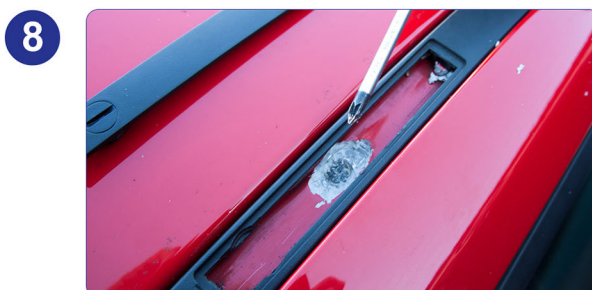
5 Using your flat head screw driver, begin to remove the putty from the centre of the channel.



6 You dont need to remove all the putty, just enough to access the fix points.



7 Once the covering layer of putty is removed, you will see the plastic fix point retaining screw.

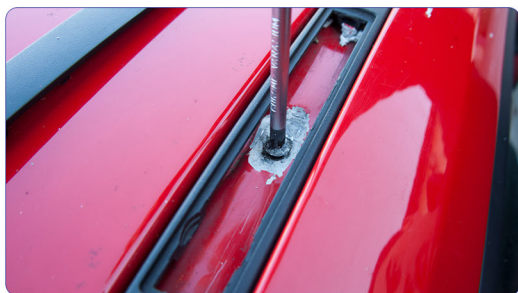


8 Using your phillips head screw driver, remove the plastic retaining screw.



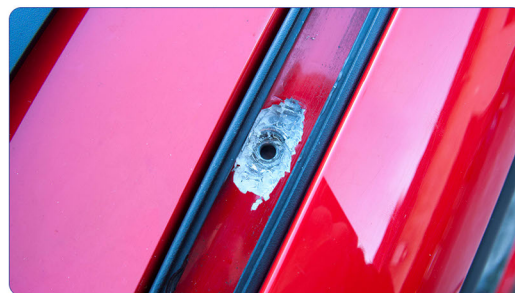
## Ford focus - finding the Fix points

9



This will only unscrew to a point. Using your fingers, remove the screw.

10



You can now fit your roof bars.